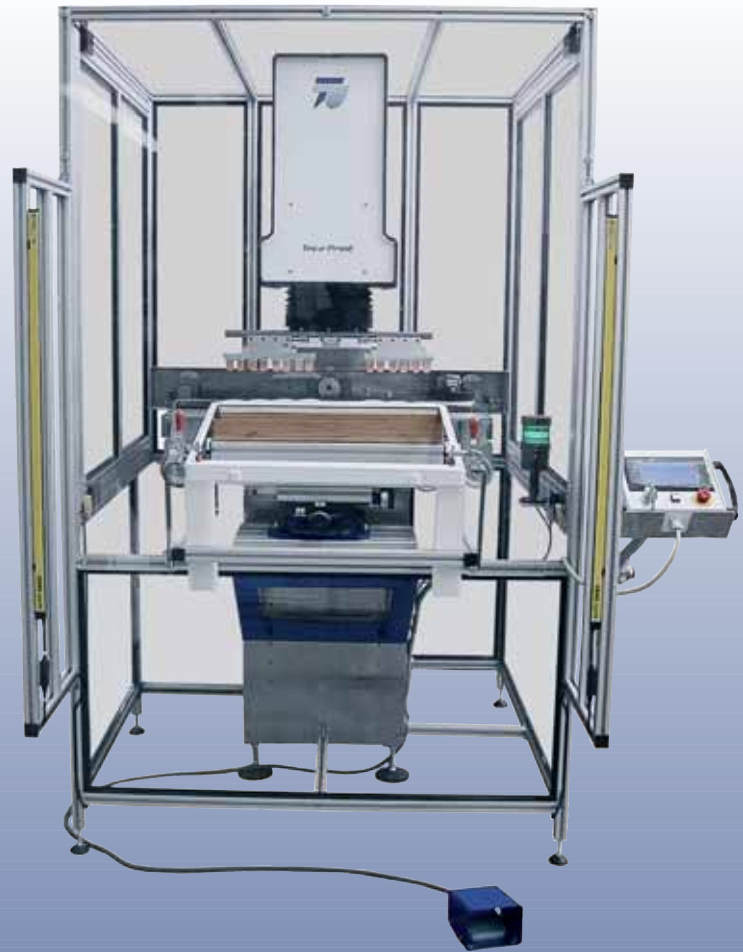


PAD PRINTING SYSTEM FOR STOVE TOP PANELS

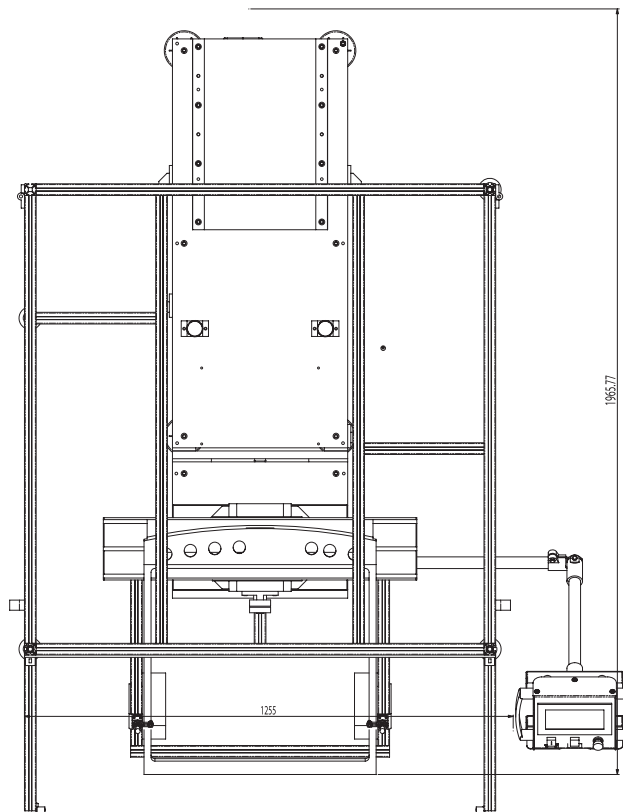
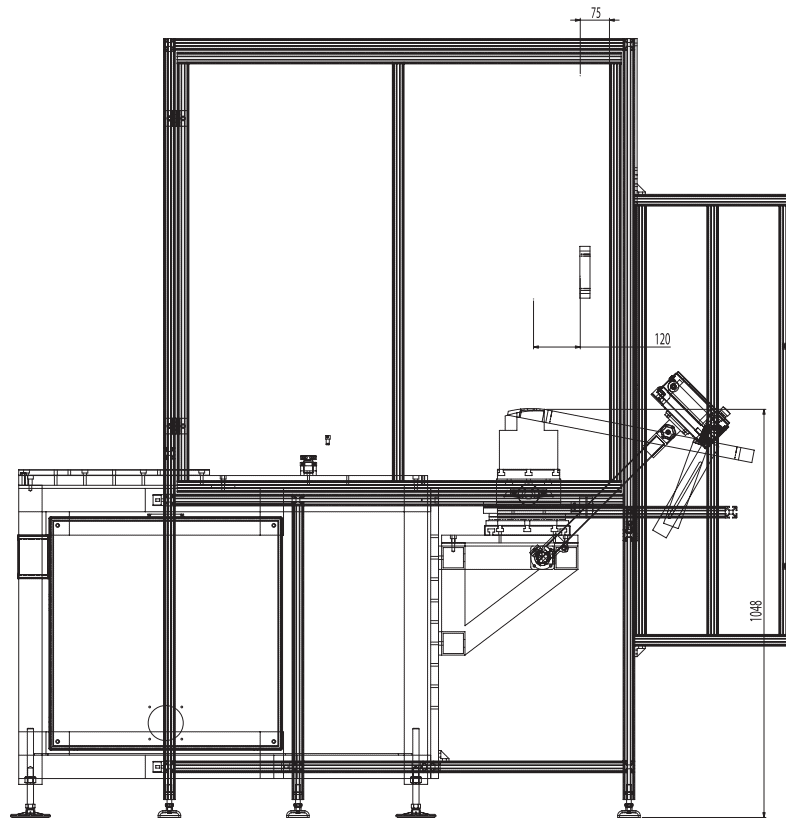


MACHINE:	TPX 552
PERIPHERAL:	light barrier, coordinate table
PRINTED PART:	stove top panels
PRINT:	1 colour
DRIVE:	electromechanical
ELECTRICAL CONNECTION:	120 V / 50 Hz
SYSTEM DIMENSIONS	
L x W x H:	1500 x 1500 x 2000 mm
WEIGHT:	approx. 500 kg
CONTROL:	Omron SPS
CAPACITY:	600 pieces / hour
LAYOUT:	see reverse side

DESCRIPTION OF SYSTEM

This system is used to print on stove top panels with the pad printing process.

The panels will be placed by hand in the proper position of the jig. The light barrier ensures a high safety level, because the printing process can only be started with the foot switch as soon as there is no obstacle in the light barrier anymore. As a special feature, the lateral sliding inking mechanism is used. It makes it possible to print large images, like this example over the total length of the product.



Pad printing system for stove top panels

706 000 246 / 02.06

Teca-Print

Teca-Print AG

Tel. +41 (0)52 645 2000

Tel. +41 (0)52 FON TECA

Postfach

Fax +41 (0)52 645 2102

Bohlstrasse 17

info@teca-print.ch

CH-8240 Thayngen

teca-print.com